



Salt Chlorinator

Self-Cleaning

Model **VIRON**



VIRON Salt Chlorinator - Self Cleaning

Humans come from the sea & salt water makes up about 70% of our bodies so it's little wonder we find salt water the most natural medium to swim in.

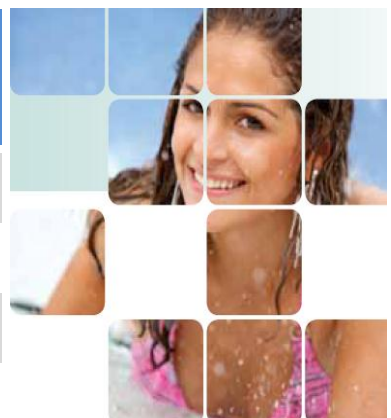
It's one reason why salt chlorinators are now the accepted standard for pool sanitizing.

But it's not the only reason. With the Viron Salt Chlorinator you also get a new benchmark in control and convenience.

- ✓ Energy efficiency switch mode power supply
- ✓ Robust reliable construction
- ✓ Intelligent self cleaning for long life
- ✓ Touch pad and time clock control



Model	Product Code	Chlorine Output / Hour	Pool Volume (Litres) Temperate Climate	Pool Volume (Litres) Tropical Climate	Max Pump Size	Max Current Including Pump
V18 Viron Salt Chlorinator	HC-58628	18 gm/h	50,000	40,000	8 amps	10 amps
V25 Viron Salt Chlorinator	HC-58629	25 gm/h	96,000	60,000	8 amps	10 amps
V35 Viron Salt Chlorinator	HC-58630	35 gm/h	130,000	80,000	8 amps	10 amps
V45 Viron Salt Chlorinator	HC-58631	45 gm/h	170,000	105,000	8 amps	10 amps



*Temperate Climate Water
Temperatures are lower and therefore inhibit algae and bacteria

**Tropical Climate Water
Temperatures are higher and require higher chlorine output to combat algae and bacterial growth.



Viron Salt Chlorinator



It is said that all life evolved from the sea and that salt water makes up 70% of our bodies, so it's little wonder we find salt pools the most natural medium to swim in.



Efficiency

The Viron Salt Chlorinator's advanced electronic power supply provides pure DC power to maximize the efficiency of the electrodes to produce the highest level of chlorine for the lowest power consumption, reducing your energy costs and keeping your pool safe and healthy.

Control

Manual dosing with liquid or granular chlorine can be haphazard. Over-dosing can cause eye irritation, itchy skin and a strong chlorine odour. The Viron Salt Chlorinator continually generates chlorine at the level you require. Set and forget.

Convenience

The easy to use touch pad enables complete control of your pump and sanitiser system. While easy to use, it's packed full of features making your swimming pool a pleasure to own and use. Chlorine output, Pool or Spa selection, filter cleaning, time of operation, and additional run times are all selected and information is provided on the large liquid crystal display. The inbuilt time clock can be simply disabled if using an external timer to control filtration and chlorinating hours.

Intelligent Self Cleaning

During operation, the anode in the electrolytic cell attracts a build up of calcium and other debris which requires periodic cleaning. Most chlorinators reverse the polarity to the cell, which in turn releases the residue of calcium and debris on the anode. The intelligent Viron chlorinator analyses the output setting to optimise the polarity of the electrolytic cell. By minimising the number of reversals ensures the cell is clean and significantly extends the life of your chlorinator.

Pool or Spa Selection

When isolating your spa from the swimming pool, demand for sanitiser is greatly reduced. It's simple really, while spa water is warm and requires sanitiser to kill and prevent the growth of bacteria and algae, its comparatively small volume means it only needs a fraction of the sanitiser that your pool requires. One touch of the "Spa" button on the Viron chlorinator and your sanitiser output is automatically reduced to suit the demands of your spa. Why is this important? Excessive sanitiser is unpleasant, causing itching skin, bleached swimwear and damaging heaters, pumps and interior finishes in your spa or pool. Just another way the Viron Chlorinator looks after your family.

Filter Backwash Timing

Sand Filters require regular backwashing to release the entrapped dirt and debris. The Viron Chlorinator has a very smart function that operates the pump for one, two or three minutes, ensuring your filter is backwashed for the correct period and turns off the electrolytic cell, preventing excessive build up of sanitiser and by-products during the backwash process. This feature also ensures that the pump cannot accidentally be left running and empty the pool, requiring expensive top-up water.

Extended Operation

Use the menu function to select extended operation and your Viron Chlorinator will automatically extend its operating hours to allow for additional filtration and sanitation during hot weather and heavy bather load periods. At an automatically determined time, the Viron will then revert to normal time clock operating hours saving you the inconvenience of manually changing operating modes.

Mineral Salts

The Viron Chlorinator is suitable for use with pool salt or AstralPool's unique AquaTherapie Minerals which give the pool water a softer feel and help prevent staining and calcification.

Integration

The Viron Chlorinator can be integrated with the AstralPool Viron Connect Pool and Spa Automation System. You've heard of home automation? When installed with the (optional) Viron Connect you gain total control of all your pool equipment, chlorinator, heater, spa jets, waterfalls and pool lighting from inside your home. Program your favourite setting into the Viron Connect to make pool and spa ownership easy and pleasurable for the whole family.

